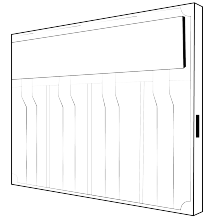
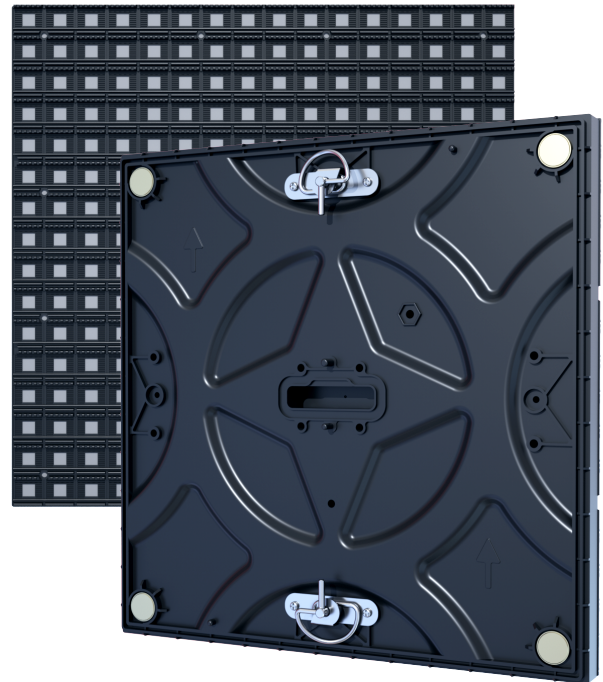


IP65 Series Type 3



Premium outdoor installation LED panel for large scale signage and scoreboard applications.

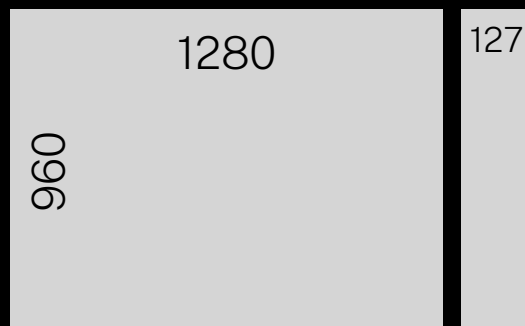


Key Features

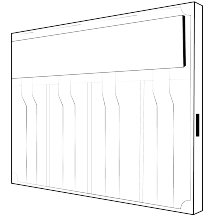
- Slim & Lightweight
- Aluminum Rust-Free Cabinet
- IP65 Waterproof Modules
- Seamless Corner Cabinet Options
- Fully Sealed Electronics
- High Brightness
- Dual 100% Front & Rear Access
- High Refresh Rate
- CE, UL, ETL

Dimensions

1280 x 960 x 127mm
(W x H x D)



IP65 Series Type 3



Product Ref.	DLW-IPC3-FX0-P [X= R/F (Rear/Front) , P= Pitch]				
Pixel Pitch (P)	5mm	6.67mm	8mm	10mm	16mm
LED Type	SMD1921	SMD2727	SMD2727	SMD2727	SMD2727
Module Size	320 x 320mm				
Module Resolution (WxH)	64 x 64 dots	48 x 48 dots	40 x 40 dots	32 x 32 dots	20 x 20 dots
Dots Per Modules	4,096 dots	2,304 dots	1,600 dots	1,024 dots	400 dots
Scan Mode	1/8	1/6	1/4	1/2	Static
Cabinet Size (WxHxD)	1280 x 960 x 127mm				
Cabinet Resolution (WxH)	256 x 192 dots	192 x 144 dots	160 x 120 dots	128 x 96 dots	80 x 60 dots
Module Quantity (WxH)	4 x 3				
Pixel Density/sqm	40,000 dots	22,500 dots	15,625 dots	10,000 dots	3,844 dots
Cabinet Material	Steel / Aluminium				
Cabinet Weight	53kg / 32kg				
Max. Brightness	5,500 nits				
Viewing Angles (WxH)	160° x 120°				
Min. Viewing Distance	≥5m	≥7m	≥8m	≥10m	≥16m
Gray-Scale	16-bits				
Colors	281 Trillion				
Refresh Rate	1,920Hz / 3,840Hz				
Input Voltage	100-240V / 50-60Hz				
Power Consumption (Max/Ave)	800 / 270W/sqm	610 / 205W/sqm	600 / 200W/sqm	610 / 205W/sqm	610 / 205W/sqm
MTBF	>10,000Hrs				
Life-Span	≥100,000Hrs				
IP-Rating (Front / Rear)	IP65 / IP54				
Operating Temperatures	- 20°C to +50°C				
Operating Humidity	0% to 90% RH				
Control System	Colorlight/Novastar -Synchronous/Asynchronous				