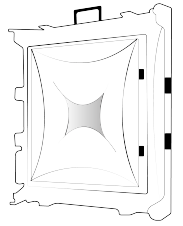
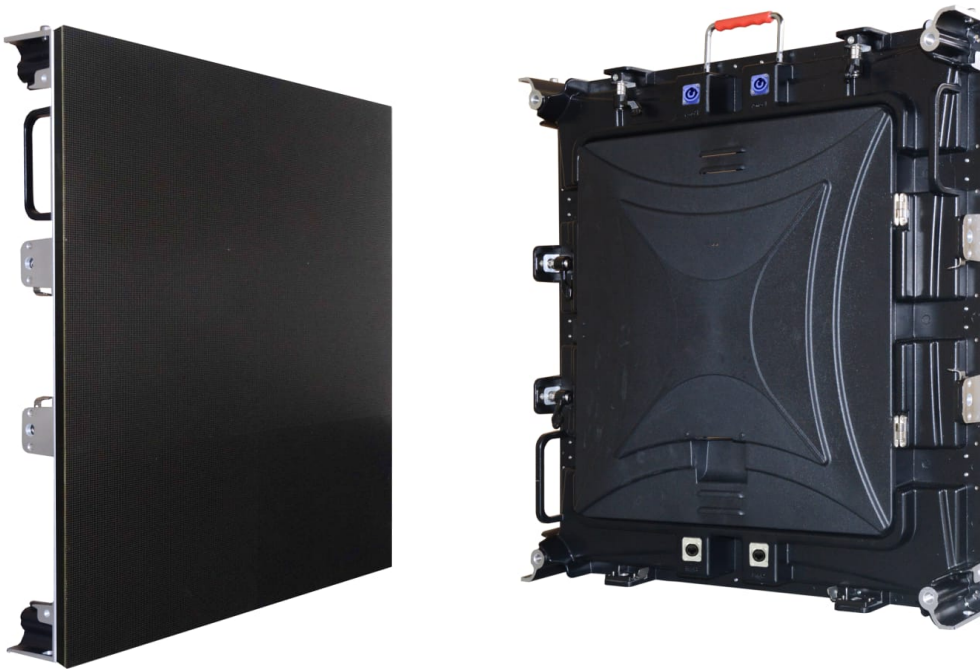


Portable Series Type 2



Multi-purpose and high-resolution LED panel for mobile and fixed applications.

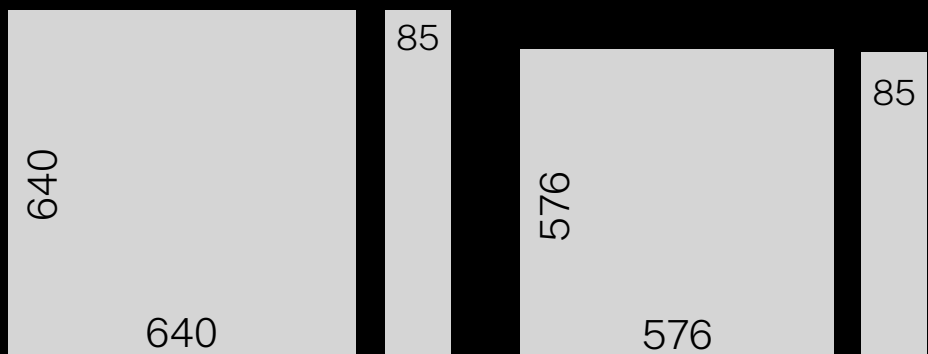


Key Features

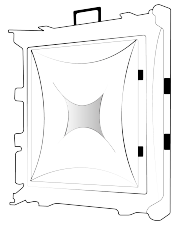
- Large Size Cabinet
- Lightweight
- Fast Assembling
- Easy Maintenance
- Front or Rear Access
- High Refresh Rate
- CE

Dimensions

640 x 640 x 85mm
 576 x 576 x 85mm
 (W x H x D)



Portable Series Type 2



Product Ref.	DLW-PRT2-RXI-P [X=F/R (Front/Rear) // P= Pitch]			DLW-PRT2-RRI-P [Rear Only // P= Pitch]	
	2.5mm	3mm	3.33mm	4mm	5mm
LED Type	SMD1515	SMD1515	SMD2121	SMD2121	SMD2121
Module Size	320 × 160 × 16mm	192 × 192 × 16mm	320 × 160 × 16mm	320 × 160 × 16mm	320 × 160 × 16mm
Module Resolution (WxH)	128 × 64 dots	64 × 64 dots	96 × 48 dots	80 × 40 dots	64 × 32 dots
Dots Per Modules	8,192 dots	4,096 dots	4,608 dots	3,200 dots	2,048 dots
Scan Mode	1/32	1/28	1/16	1/16	1/13
Cabinet Size (WxHxD)	640 × 640 × 85mm	576 × 576 × 85mm	640 × 640 × 85mm	640 × 640 × 85mm	640 × 640 × 85mm
Cabinet Resolution (WxH)	256 × 256	192 × 192	192 × 192	160 × 160	128 × 128
Module Quantity (WxH)	2 × 4 pcs	3 × 3 pcs	2 × 4 pcs	2 × 4 pcs	2 × 4 pcs
Pixel Density/sqm	160,000 dots	110,889 dots	90,000 dots	62,500 dots	40,000 dots
Cabinet Material	Die-cast Aluminum			Die-cast Aluminum	
Cabinet Weight	10kg	8.5kg	10kg	10kg	8.5kg
Max. Brightness	1,200-1,500 nits			1,200-1,500 nits	
Viewing Angles (WxH)	160° × 140°			160° × 140°	
Min. Viewing Distance	≥2.5m	≥3.0m	≥3.5m	≥4m	≥5m
Gray-Scale	16-bits			16-bits	
Colors	281 Trillion			281 Trillion	
Refresh Rate	3,840Hz			3,840Hz	
Input Voltage	100-240V / 50-60Hz			100-240V / 50-60Hz	
Power Consumption (Max/Ave)	650 / 200W/sqm	650 / 200W/sqm	600 / 180W/sqm	600 / 180W/smq	600 / 180W/smq
MTBF	>10,000Hrs				
Life-Span	≥100,000Hrs				
IP-Rating (Front / Rear)	IP45 / IP45				
Operating Temperatures	- 20°C to +45°C				
Operating Humidity	0% to 90% RH				
Control System	Colorlight/Novastar -Synchronous				